

# 焊管刀具

## Various tube machining tools

我公司开发生产的各类焊管加工刀具用硬质合金铣边刀片、去毛刺刀片、倒角刀片、切槽切断刀片，具有强度高、抗冲击力强、寿命长等特点、广泛应用于各类焊管铣边、去毛刺、倒角等加工。

Various tube machining tools developed by CTRI such as carbide edge milling inserts, tube scarfing inserts, radius inserts and grooving inserts demonstrate great impact resistance and better life performance etc. Those are widely used in welded tube edge milling, scarfing and chamfer.

GY46 是我公司毛刺刀专用硬质合金牌号，具有良好的抗高温性能，高韧性。主要用于各种中小型焊管去除焊料专用刀具。搭配 CVD 涂层后，具有良好的加工条件和使用寿命。

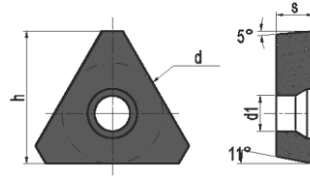
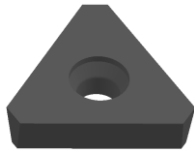
GY75 是我公司毛刺刀专用硬质合金牌号，具有较高韧性。结合 CVD 涂层之后具有很高的红硬性。主要用于各种 去除焊料专用刀具。

GY03 材质具有很高的耐磨性和韧性，可用于耐热钢、高锰钢、不锈钢等难加工材料及一般钢材、铸铁和有色金属的精加工和半精加工，特别适合于平头倒棱加工，可以搭配 CVD/PVD 涂层使用。

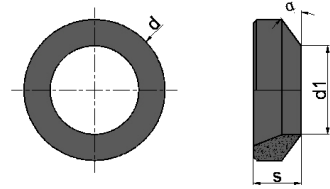
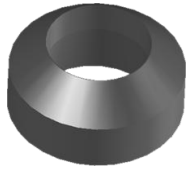
GY75 is a specialized carbide grade for scarfing inserts with great tenacity. Combined with CVD coating, inserts show better red-hardness. It is extensively used for scarfing tools.

GY03 shows high wear resistance and tenacity and can be used for heat-resistant steel, stainless steel and other difficult-to-machine materials. Also, it applies in semi-finish and finish machining of general purpose steel, cast iron and non-ferrous metals etc. It is especially suitable for tube end machining.

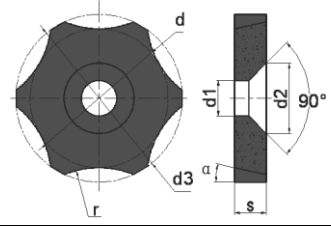
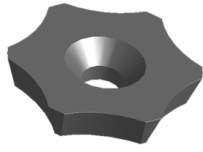
GY87 demonstrates high hardness and intensity with excellent comprehensive performance. It is specially developed for hard to machine materials such as stainless steel, heat resistant steel etc. It can be applied with CVD/PVD coating.



型号	尺寸 (mm)				牌号	
	d	h	s	d1	GY5357	GY4581
TPEW3307	19.05	25	7	6.6	○	●



型号	尺寸 (mm)				牌号	
	d	s	d1	$\alpha$	GY7552	GY4652
107JD1-2	10	5.5	6	43°	○	●
107JD1-2.1	10	4.5	6	43°	○	●
107JD1-2.2	10	4.5	5	43°	○	●
107JD1-3	13	6	8	38°	○	●
107JD1-3.2	13	7	7	38°	○	●
107JD1-3Y	13	6	8	42°	○	●
107JD1-4.1	22	10	12	36°	○	●
107JD1-4.2	22	10	15	36°	○	●
107JD1-5	30	12	20	36°	○	●
107JD1-6	35	12	22	36°	○	●



型 号	尺 寸 (mm)							牌 号	
	d	s	d1	d2	d3	$\alpha$	r	GY4652	GY7552
107JD3-6	20.7	4.76	5.3	10.5	25	15°	47.63	●	○
107JD3-5	20.7	4.76	5.3	10.5	25	15°	38.89	●	○
107JD3-4	20.7	4.76	5.3	10.5	25	15°	27.51	●	○
107JD3-3	20.7	4.76	5.3	10.5	25	15°	21.79	●	○
107JD3-2	20.7	4.76	5.3	10.5	25	15°	16.71	●	○
107JD3-1	20.7	4.76	5.3	10.5	25	15°	13.54	●	○